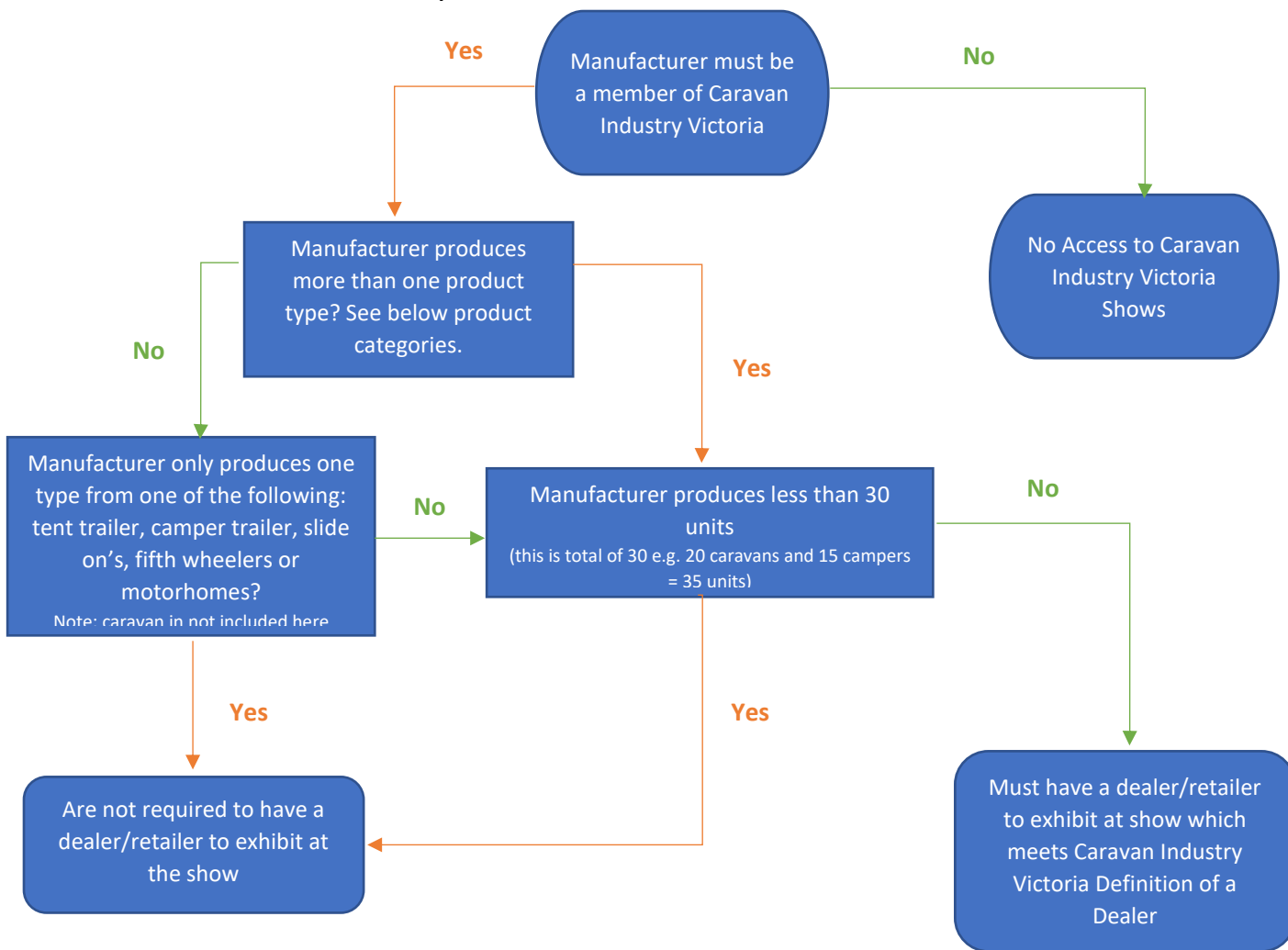


Caravan Industry Victoria – Show Rules for Caravan & RV Exhibitors



| Category | Product Type | Definition |
|-------------------------|-------------------|---|
| Camper Trailers | Tent Trailer | Box trailer with tent / canvas walls and canvas roof |
| | Camper Trailer | Solid roof, expanding canvas or rigid walls |
| Caravans | Caravan | Fixed wall/s, fixed roof |
| | Pop Top | Fixed walls, expanding roof |
| | Expander | Fold out wall/s or slide out wall/s |
| | Utility | Fixed walls, extra load area |
| | Hybrid | Uses elements of a caravan/pop top however has fixed wall/s |
| Motorhome | Motorhome | Motorised commercial or truck cab fitted with a separate living area |
| | Campervan | Motorised van fitted with a living area within |
| Slide On | Slide on Caravans | Portable unit that is mounted onto the towing vehicle with Fixed walls |
| | Slide on Campers | Portable unit that is mounted onto the towing vehicle with Fold out canvas / rigid wall/s or slide out wall/s |
| 5 th Wheeler | 5th Wheeler | A trailer which is coupled in the bed of the towing vehicle. |

Disclaimer:

- The category and product summary list the known categories and products at the time of publication, Caravan Trades and Industry Association of Victoria assumes no responsibility to the compatibility of this summary to any products as this summary has been developed as a guide.
- Vehicle Standard (Australian Design Rule - Definitions and Vehicle Categories) 2005 stipulates definitions for products such as:
 - CARAVAN - any enclosed trailer designed primarily for human occupation whilst stationary.
 - FIFTH WHEEL ASSEMBLY - a 'Fifth Wheel Coupling' including any turn-table, mounting plate, sliding assembly, load cell and other equipment mounted between the towing vehicle chassis and the trailer 'Skid Plate', but not including any 'Attachment Sections'.
 - FIFTH WHEEL COUPLING - a device, other than the 'Skid Plate' and the kingpin (which are parts of a 'Semi-Trailer'), used with a 'Prime Mover', 'Semi-Trailer' or a 'Converter Dolly' to permit quick coupling and uncoupling and to provide for articulation.
 - Goods Vehicles - 4.5.2. A vehicle constructed for both the carriage of persons and the carriage of goods shall be considered to be primarily for the carriage of goods if the number of seating positions times 68 kg is less than 50 percent of the difference between the 'Gross Vehicle Mass' and the 'Unladen Mass'.