



# Caravan Industry Victoria

## Show Compliance



# Caravan Industry Victoria Show Compliance

Caravan Industry Victoria (CIV) has a core value on compliance and this is replicated in its shows with a strong stance that all products on display at its shows must be compliant. CIV takes compliance very seriously, with a strong show compliance process with a focus on being pro-active to compliance rather than reactive. Exhibitors are required to provide evidence of compliance prior to commencement of the show, plus random inspections are carried out on-site on the show. Please find the below details and attached flow chart that explains the CIV show compliance process.

## Key Criteria

- New manufacturers to any CIV shows must have a pre-show inspection by an independent engineer prior to the show.
- Any new products an existing manufacturer wishes to exhibit must have a pre-show inspection by an independent engineer prior to the show.
- New products refers to a new market category not a new layout or different colours, as shown below in 'Product Categories'.
- Manufacturers/exhibitors must provide compliance documentation prior to the commencement of shows including a compliance declaration.
- Compliance documentation must be for all vehicles that will be on display at the show.
- All products being exhibited at the show must be declared prior to the show.
- RVMAP participants do not have to supply compliance paperwork, only a compliance declaration, as this is stored with Caravan Industry Association of Australia.
- Inspections will be conducted on all manufacturers at the show.
- The 'CIV Regulation Summary' outlines the known regulations in which products must be compliant too.
- Only new products can be on display at the show. This means no used or second-hand products.

## CIV Compliance Terms & Conditions:

- Failure to meet these requirements will result in no attendance/removal from the show
- Any non compliance will go through CIV non-compliant process which may result in no attendance/removal from the show
- For more details please refer to the show terms & conditions

Category	Product	Definition
Camper Trailer	Tent Trailer	Box trailer with tent / canvas walls and canvas roof
	Camper Trailer	Solid roof, expanding canvas or rigid walls
Caravans	Caravan	Fixed wall/s, fixed roof
	Pop Top	Fixed walls, expanding roof
	Expander	Fold out wall/s or slide out wall/s
	Utility	Fixed walls, extra load area
Motorhome	Motorhome	Motorised commercial or truck cab fitted with a separate living area
	Campervan	Motorised van fitted with a living area within
Slide On	Slide On Caravans	Fixed walls
	Slide On Campers	Fold out canvas / rigid wall/s or slide out wall/s
5th Wheeler	5th Wheeler	A trailer which is coupled in the bed of the towing vehicle

## Disclaimer:

- The category and product summary lists the known categories and products at the time of publication, however there may be other unknown requirements such as other state or country requirements. Caravan Trades and Industry Association of Victoria assumes no responsibility to the compatibility of this summary to any products as this summary has been developed as a guide.
- Vehicle Standard (Australian Design Rule - Definitions and Vehicle Categories) 2005 stipulates definitions for products such as:
  - CARAVAN- any enclosed trailer designed primarily for human occupation whilst stationary.
  - FIFTH WHEEL ASSEMBLY- a 'Fifth Wheel Coupling' including any turn-table, mounting plate, sliding assembly, load cell and other equipment mounted between the towing vehicle chassis and the trailer 'Skid Plate', but not including any 'Attachment Sections'.
  - FIFTH WHEEL COUPLING- a device, other than the 'Skid Plate' and the kingpin (which are parts of a 'Semi-Trailer'), used with a 'Prime Mover', 'Semi-Trailer' or a 'Converter Dolly' to permit quick coupling and uncoupling and to provide for articulation.
  - Goods Vehicles- 4.5.2. A vehicle constructed for both the carriage of persons and the carriage of goods shall be considered to be primarily for the carriage of goods if the number of seating positions times 68 kg is less than 50 percent of the difference between the 'Gross Vehicle Mass' and the 'Unladen Mass'.

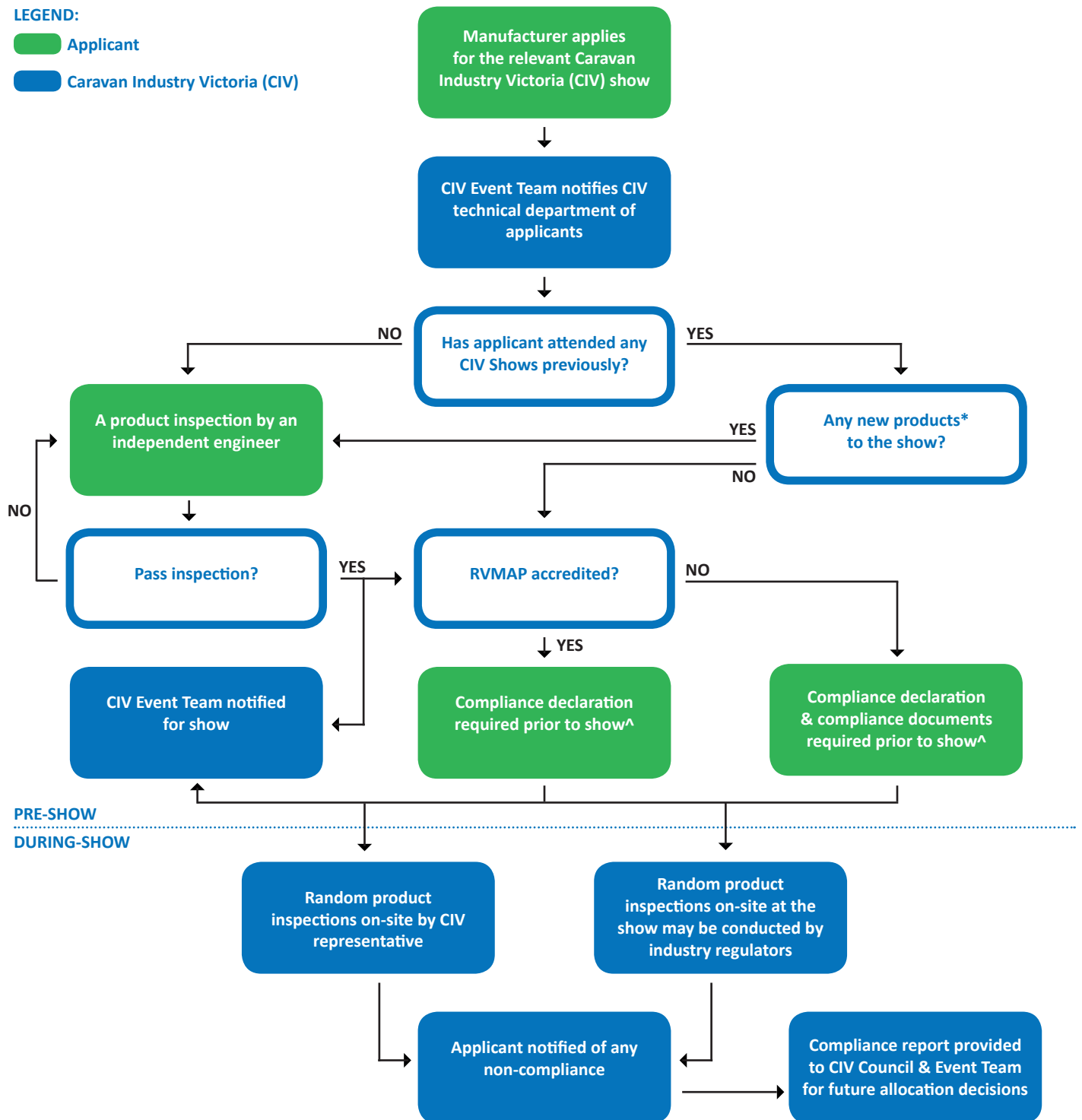


# Caravan Industry Victoria Show Compliance Process

**LEGEND:**

Applicant

Caravan Industry Victoria (CIV)



\* New products refers to a new market category not a new layout or different colours.

^ Compliance declaration includes products to be displayed at the show. Compliance documents includes ADR 62, Gas Cert, Electrical cert etc. to be provided for a vehicle that will be on display at the show.

**CIV Compliance Terms & Conditions:**

Failure to meet these requirements will result in no attendance/removal from the show.

Any non compliance will go through CIV non-compliant process which may result in no attendance/removal from the show.

Only new products may be on display at the show, no used products.

For more details please refer to the show terms & conditions.